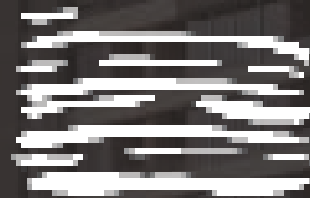


LANDMARK



MEMAAR
ALMORSHEDY

Tower 5, Bavaria Town, Kattameya, Ring road - Cairo - Egypt

19086

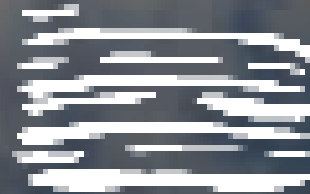
www.monshedy.com

[@memaar.almonshedy](#)

[f memaar.monshedy](#)

[i memaaralmonshedy](#)

W E L C O M E T O



DEGLA LANDMARK

LANDMARK IS ONE OF THE NEWEST PROJECTS OF MEMAAR ALMORSHEDY, AND IT'S A RESIDENTIAL AND COMMERCIAL COMPLEX ON AN AREA OF 62,760 M², WHICH MAKES IT ONE OF LARGEST ARCHITECTURAL PROJECTS NOT ONLY IN EGYPT BUT EVEN WORLDWIDE.

LANDMARK IS A RESIDENTIAL COMPLEX DESIGNED TO KEEP PACE WITH THE LATEST TECHNIQUES OF MODERN ARCHITECTURE THROUGH THE FUSION ARCHITECTURAL ART WITH THE SCULPTURE ART, AND THIS SHOWS UP THROUGH THE FRONTAGES AND SPACING WITH ATTRACTIVE LIGHTING THAT ALLOWS SUNLIGHT TO FALL UPON BUILDINGS. THE PROJECT CONSISTS OF 4,928 RESIDENTIAL UNIT WITH VARIOUS AREAS.

” نبدع.. ننمى.. نطور. ليس فقط لخلق مساحة للسكن بل لخلق
مساحة مفعمة بالحياة، تخيل مستقبلك الساطع واكتشف إمكانياتك
ودعنا نساعدك على تحقيقها.“

“Innovating”

“Growing”

“Evolving”

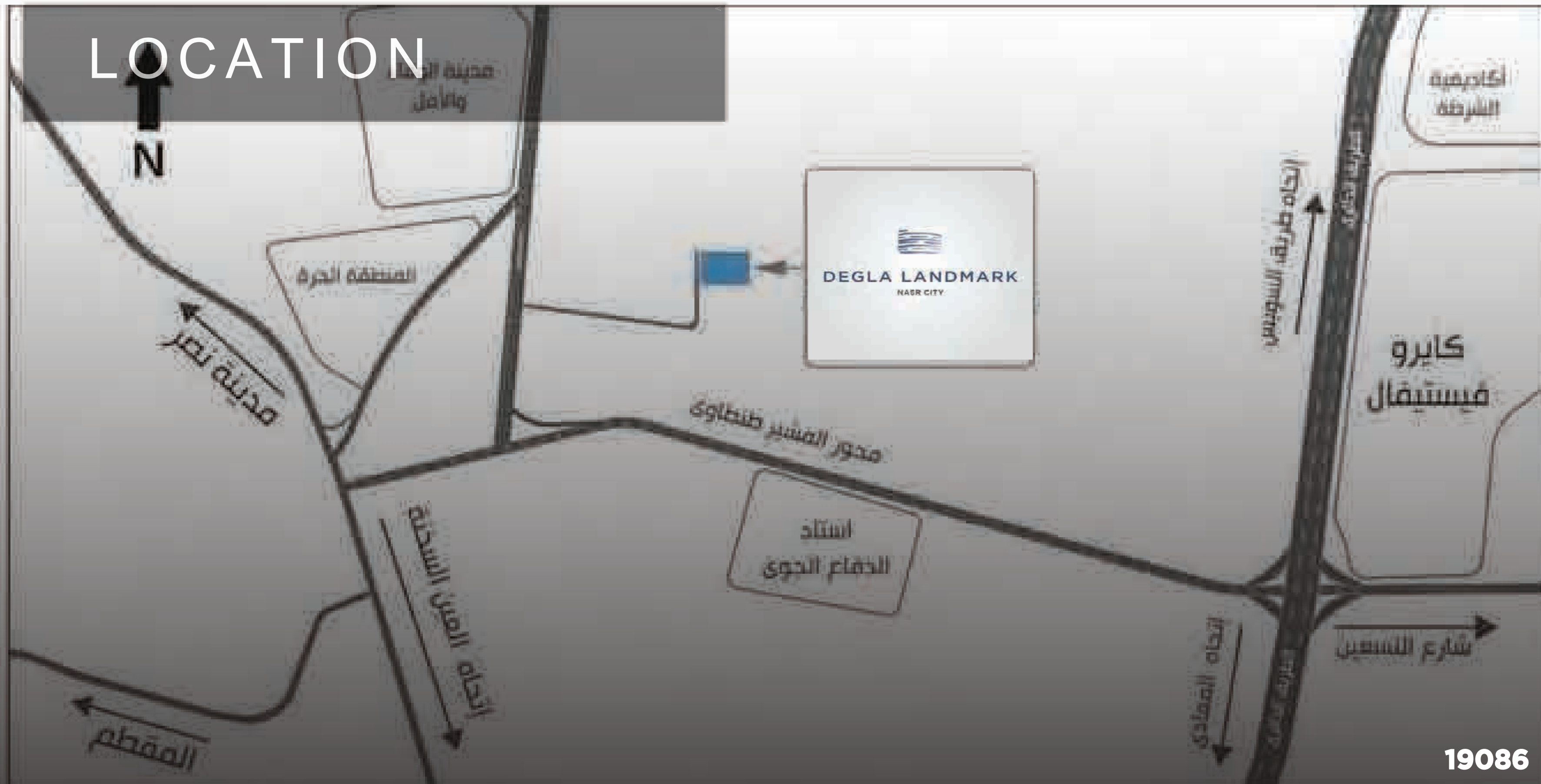
Not just creating a space to live, but a living
space. Envision your brightest future. Discover the
possibilities.

 MEMAAR
ALMORSHEDY

19086

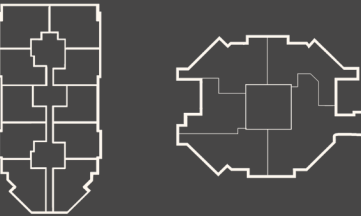


N



SITE PLAN

KEY LEGEND



EMERALD DIAMOND



LANDMARK

DESIGN CONCEPT & INSPIRATION

WE HAVE DESIGNED THE LAYOUT OF THE PROJECT TO BE AS PRECIOUS AND LUXURIES AS THE GEMSTONES ARE. WE DIVIDED IT INTO TWO DISTRICTS, THE DIAMOND DISTRICT AND THE EMERALD DISTRICT. AS KNOWN DIAMONDS ARE SIMPLY THE TIMELESS QUINTESSENCE OF EVERYTHING CHARMING, ELEGANT, AND EXTRAORDINARY, WE INTEND TO SHAPE OUR PROJECT AS A PIECE OF DIAMOND THAT REFLECTS; A SYMBOL OF ROYALTY AND POWER, ICONIC FASHION STATEMENT, AND AN ANNOUNCEMENT OF TRUE LOVE. EMERALD IS ONE OF FOUR GEMSTONES GLOBALLY RECOGNISED AS PRECIOUS. THIS DEEPLY ALLURING PRECIOUS GEM HAS A STRIKING COLOR THAT IS UNMATCHED IN ITS BEAUTY, WITH SHADES OF VIBRANT GREEN REPRESENTING MOTHER NATURE’S ROLLING HILLS AND GRASSY FIELDS; TO THE SATURATED TONES OF EVERGREEN FORESTS. A PERFECT FIT, AS THE COLOR GREEN IS TYPICALLY ASSOCIATED WITH RENEWAL, WEALTH, PROSPERITY, HEALTH AND DETOXIFICATION: WHICH IS REFLECTED BY THE DESIGN OF OUR PROJECT’S LAYOUT AND DESIGN.

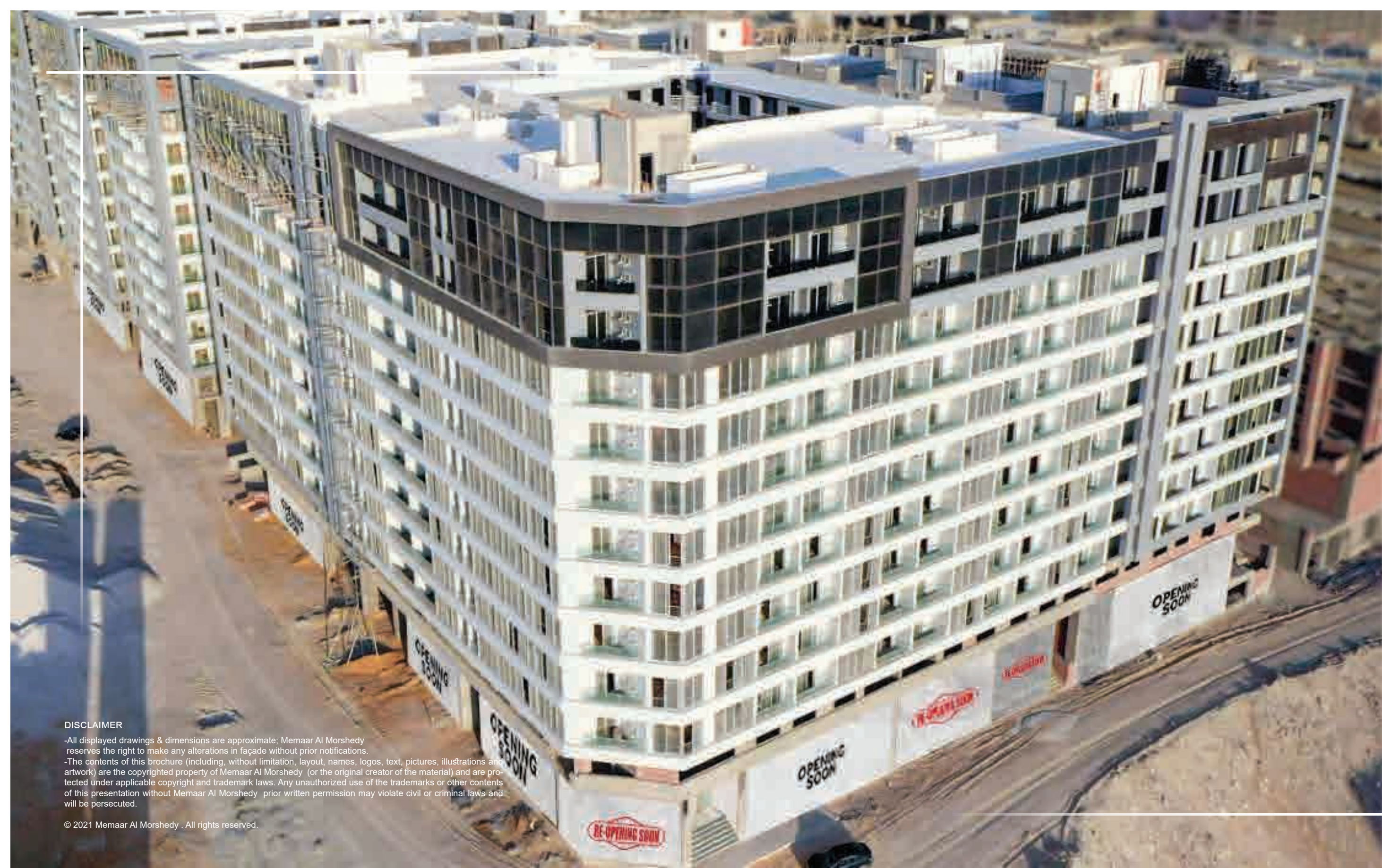
مفهوم التصميم والإلهام

لقد صممنا مخطط المشروع ليكون ثميناً ورفاهية مثل الأحجار الكريمة قسمناها إلى قسمين ، منطقة الماس ومنطقة الزمرد نظرًا لأن الماس المعروف هو بلا منازع الجواهر الخالد لكل شيء خادع وأنيق وغير عادي ، فإننا نعتزم تشكيل مشروعنا كقطعة من الماس تعكس رمز الملكية والقوة ، بيان أزياء مبدع ، وإعلان الحب الحقيقي الزمرد هو واحد من أربعة أحجار كريمة معترف بها عالميًا على أنها ثمينة. هذه الأحجار الكريمة الجذابة للغاية لها لون مذهل لا مثيل له في جمالها ، مع ظلال من اللون الأخضر النابض بالحياة تحاكي التلال والمروج العشبية في الطبيعة الأم. إلى النغمات المشبعة من الغابات دائمة الخضرة. ملاءمة مثالية ، حيث يرتبط اللون الأخضر عادةً بالتجديد والثروة والازدهار والصحة وإزالة السموم: وهو ما ينعكس في تصميم تخطيط وتصميم مشروعنا



An aerial photograph of a city grid, showing streets and building footprints. A large, dark gray rectangular overlay is centered on the image. Within this overlay is a smaller white-bordered rectangle containing the text "PHOTOS FROM THE SITE".

PHOTOS FROM THE SITE



LANDMARK

DISCLAIMER
-All displayed drawings & dimensions are approximate; Memaar Al Morshedy reserves the right to make any alterations in façade without prior notifications.
-The contents of this brochure (including, without limitation, layout, names, logos, text, pictures, illustrations and artwork) are the copyrighted property of Memaar Al Morshedy (or the original creator of the material) and are protected under applicable copyright and trademark laws. Any unauthorized use of the trademarks or other contents of this presentation without Memaar Al Morshedy prior written permission may violate civil or criminal laws and will be persecuted.

© 2021 Memaar Al Morshedy . All rights reserved.



**MEMAAR
ALMORSHEDY**

19086



LANDMARK

DISCLAIMER

-All displayed drawings & dimensions are approximate; Memaar Al Morshedy reserves the right to make any alterations in façade without prior notifications.
-The contents of this brochure (including, without limitation, layout, names, logos, text, pictures, illustrations and artwork) are the copyrighted property of Memaar Al Morshedy (or the original creator of the material) and are protected under applicable copyright and trademark laws. Any unauthorized use of the trademarks or other contents of this presentation without Memaar Al Morshedy prior written permission may violate civil or criminal laws and will be persecuted.

© 2021 Memaar Al Morshedy . All rights reserved.



19086
**MEMAAR
ALMORSHEDY**



LANDMARK

DISCLAIMER

-All displayed drawings & dimensions are approximate; Memaar Al Morshedy reserves the right to make any alterations in façade without prior notifications.
-The contents of this brochure (including, without limitation, layout, names, logos, text, pictures, illustrations and artwork) are the copyrighted property of Memaar Al Morshedy (or the original creator of the material) and are protected under applicable copyright and trademark laws. Any unauthorized use of the trademarks or other contents of this presentation without Memaar Al Morshedy prior written permission may violate civil or criminal laws and will be persecuted.

© 2021 Memaar Al Morshedy . All rights reserved.



**MEMAAR
ALMORSHEDY**

19086



LANDMARK

EVERYTHING WITHIN YOUR REACH...

DISCLAIMER

-All displayed drawings & dimensions are approximate; Memaar Al Morshedy reserves the right to make any alterations in façade without prior notifications.
-The contents of this brochure (including, without limitation, layout, names, logos, text, pictures, illustrations and artwork) are the copyrighted property of Memaar Al Morshedy. (or the original creator of the material) and are protected under applicable copyright and trademark laws. Any unauthorized use of the trademarks or other contents of this presentation without Memaar Al Morshedy prior written permission may violate civil or criminal laws and will be persecuted.

© 2021 Memaar Al Morshedy . All rights reserved.



**MEMAAR
ALMORSHEDY**

19086

A dark, moody photograph of a modern interior space. In the foreground, two black, rounded armchairs are visible. The background features a large glass wall that reflects the interior and exterior. The overall atmosphere is sophisticated and minimalist.

INTERIOR PHOTOS

FROM SITE



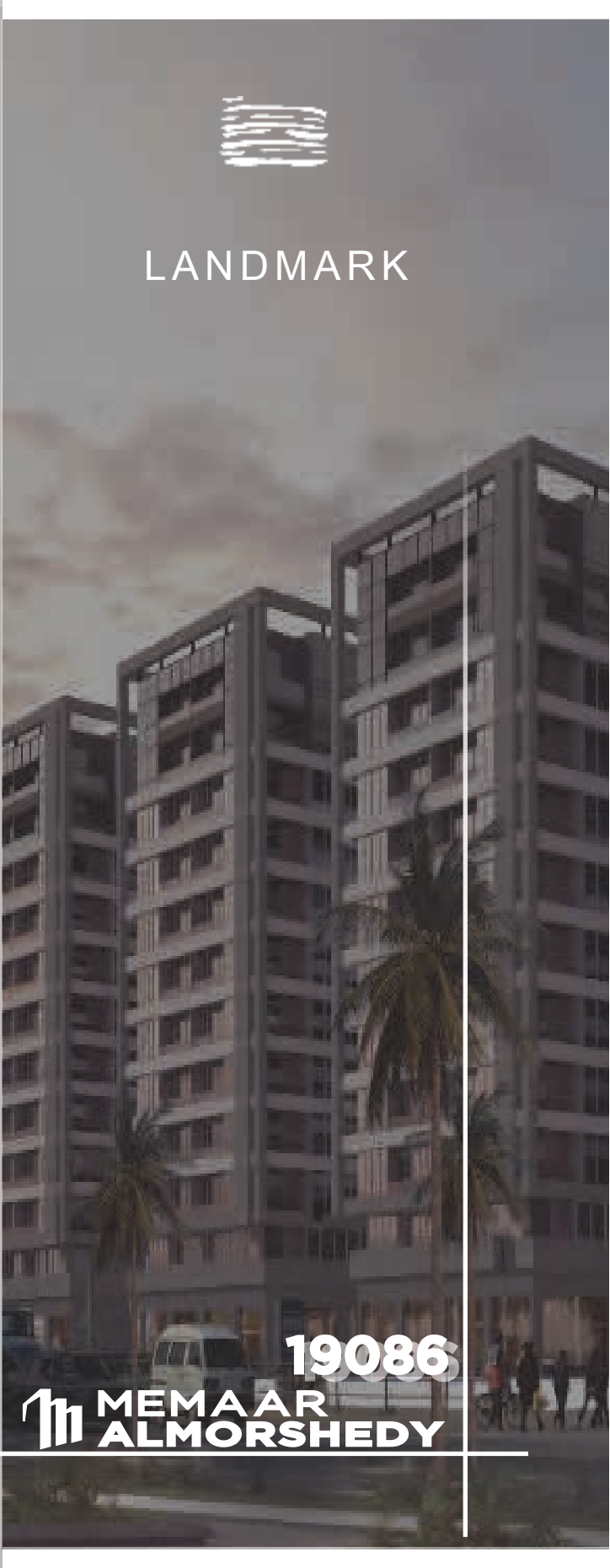
DISCLAIMER

-All displayed drawings & dimensions are approximate; Memaar Al Morshedy reserves the right to make any alterations in façade without prior notifications.
-The contents of this brochure (including, without limitation, layout, names, logos, text, pictures, illustrations and artwork) are the copyrighted property of Memaar Al Morshedy (or the original creator of the material) and are protected under applicable copyright and trademark laws. Any unauthorized use of the trademarks or other contents of this presentation without Memaar Al Morshedy prior written permission may violate civil or criminal laws and will be persecuted.

© 2021 Memaar Al Morshedy . All rights reserved.



LANDMARK



19086
MEMAAR
ALMORSHEDY



LANDMARK

DISCLAIMER

-All displayed drawings & dimensions are approximate; Memaar Al Morshedy reserves the right to make any alterations in façade without prior notifications.
-The contents of this brochure (including, without limitation, layout, names, logos, text, pictures, illustrations and artwork) are the copyrighted property of Memaar Al Morshedy (or the original creator of the material) and are protected under applicable copyright and trademark laws. Any unauthorized use of the trademarks or other contents of this presentation without Memaar Al Morshedy prior written permission may violate civil or criminal laws and will be persecuted.

© 2021 Memaar Al Morshedy . All rights reserved.



19086
MEMAAR
ALMORSHEDY



LANDSCAPE DESIGN
FOR THE DIAMOND AND
EMERLAD STRIP



DISCLAIMER

-All displayed drawings & dimensions are approximate; Memaar Al Morshedy reserves the right to make any alterations in façade without prior notifications.
-The contents of this brochure (including, without limitation, layout, names, logos, text, pictures, illustrations and artwork) are the copyrighted property of Memaar Al Morshedy (or the original creator of the material) and are protected under applicable copyright and trademark laws. Any unauthorized use of the trademarks or other contents of this presentation without Memaar Al Morshedy prior written permission may violate civil or criminal laws and will be persecuted.

© 2021 Memaar Al Morshedy . All rights reserved.



LANDMARK

19086
MEMAAR
ALMORSHEDY



LANDMARK

19086

**MEMAAR
ALMORSHEDY**



DISCLAIMER

-All displayed drawings & dimensions are approximate; Memaar Al Morshedy reserves the right to make any alterations in façade without prior notifications.
-The contents of this brochure (including, without limitation, layout, names, logos, text, pictures, illustrations and artwork) are the copyrighted property of Memaar Al Morshedy (or the original creator of the material) and are protected under applicable copyright and trademark laws. Any unauthorized use of the trademarks or other contents of this presentation without Memaar Al Morshedy prior written permission may violate civil or criminal laws and will be persecuted.

© 2021 Memaar Al Morshedy . All rights reserved.



DISCLAIMER

-All displayed drawings & dimensions are approximate; Memaar Al Morshedy reserves the right to make any alterations in façade without prior notifications.
-The contents of this brochure (including, without limitation, layout, names, logos, text, pictures, illustrations and artwork) are the copyrighted property of Memaar Al Morshedy (or the original creator of the material) and are protected under applicable copyright and trademark laws. Any unauthorized use of the trademarks or other contents of this presentation without Memaar Al Morshedy prior written permission may violate civil or criminal laws and will be persecuted.

© 2021 Memaar Al Morshedy . All rights reserved.



LANDMARK

19086
**MEMAAR
ALMORSHEDY**



LANDMARK

19086

**MEMAAR
ALMORSHEDY**

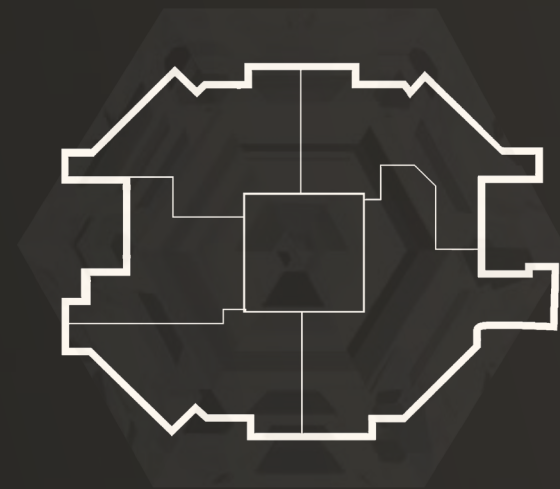


DISCLAIMER

-All displayed drawings & dimensions are approximate; Memaar Al Morshedy reserves the right to make any alterations in façade without prior notifications.
-The contents of this brochure (including, without limitation, content, design, illustrations and artwork) are the copyrighted property of Memaar Al Morshedy (or the original creator of the material) and are protected under applicable copyright and trademark laws. Any unauthorized use of the trademarks or other contents of this presentation without Memaar Al Morshedy prior written permission may violate civil or criminal laws and will be persecuted.

© 2020 Memaar Al Morshedy . All rights reserved.

THE DIAMOND 1

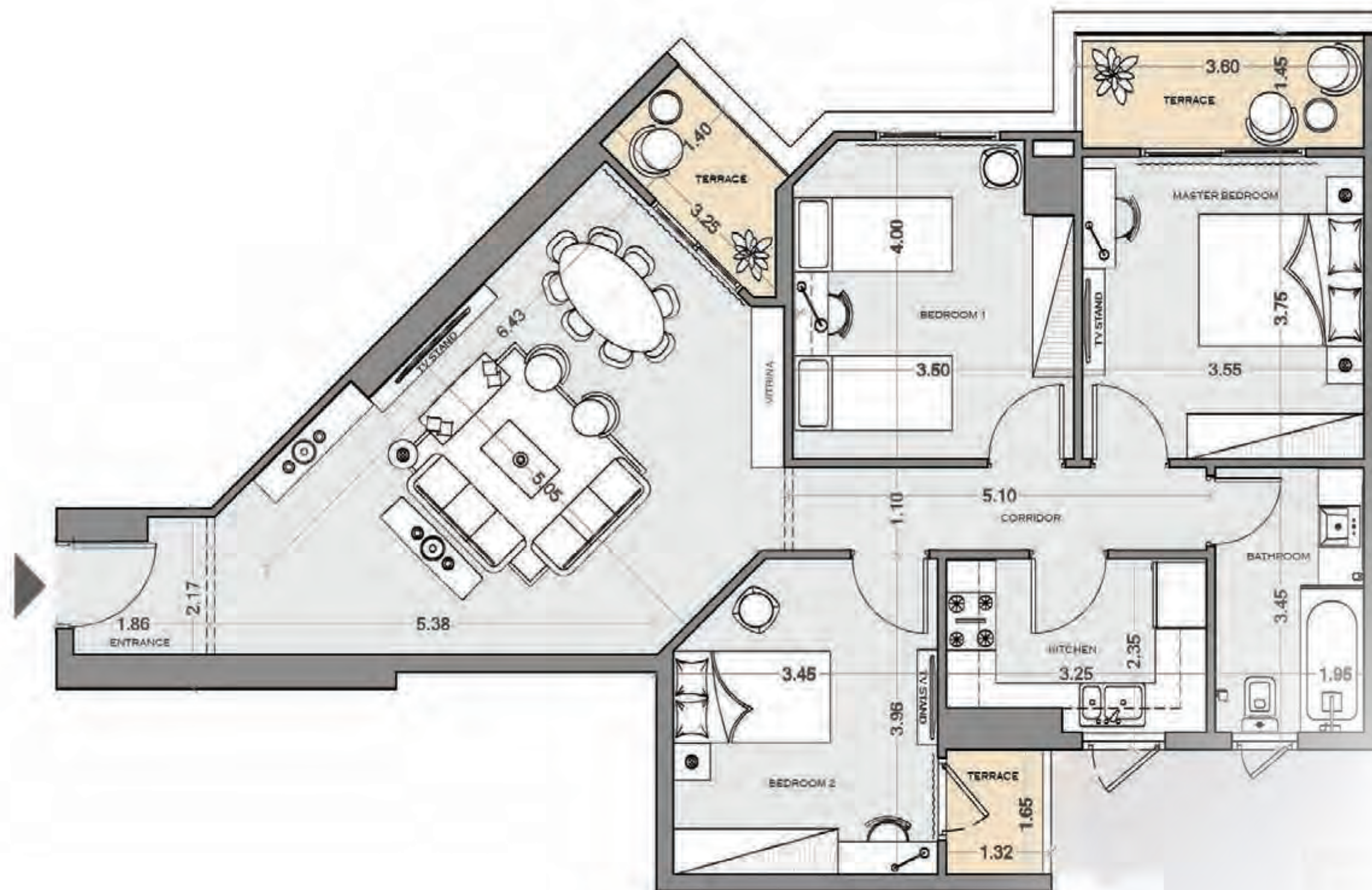
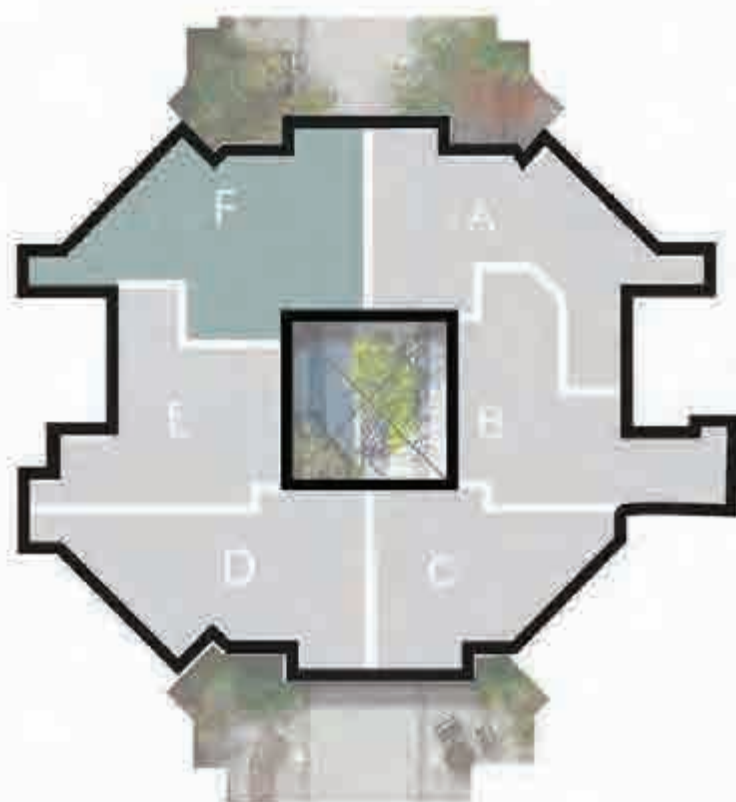




DEGLA LANDMARK

DIAMOND 1

TYPE	F
AREA	136 m ²
BEDROOMS	3 BED.

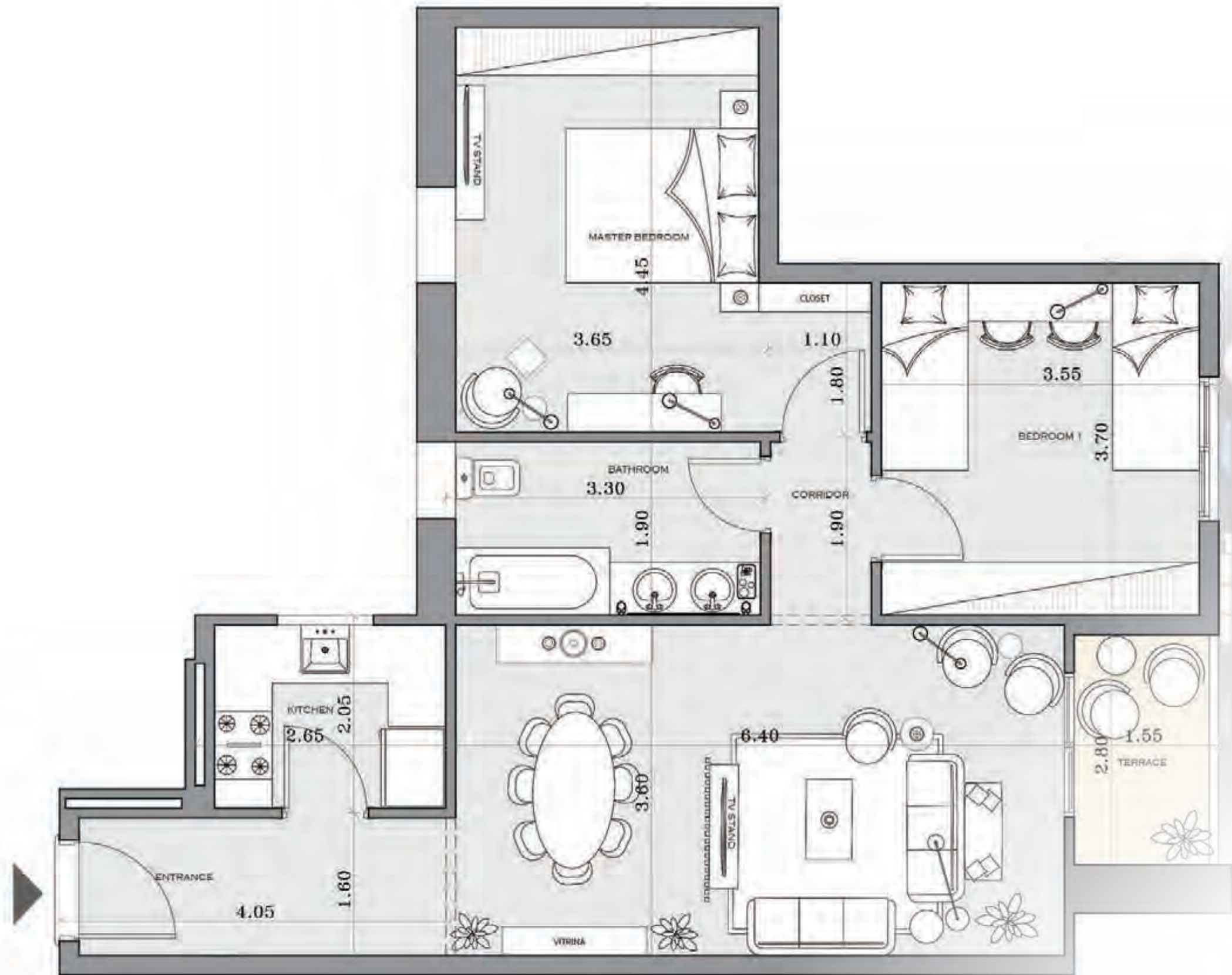
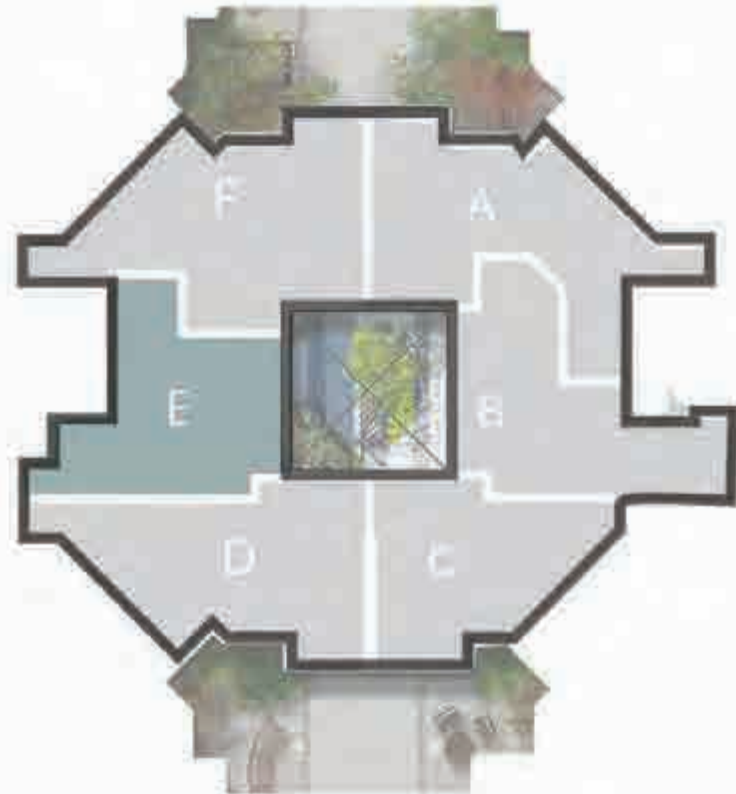




DEGLA LANDMARK

DIAMOND 1

TYPE	E
AREA	99 m ²
BEDROOMS	2 BED.

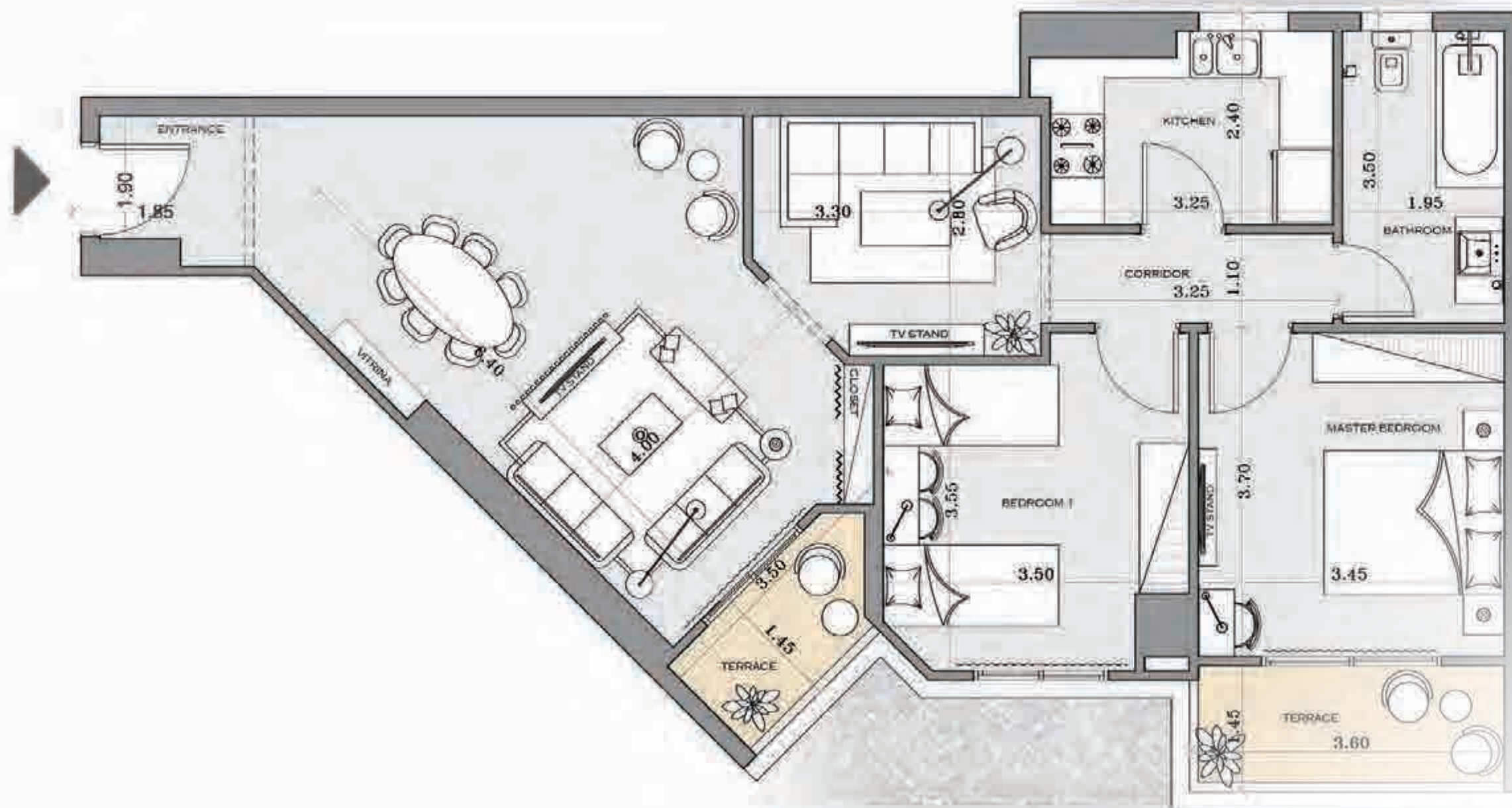




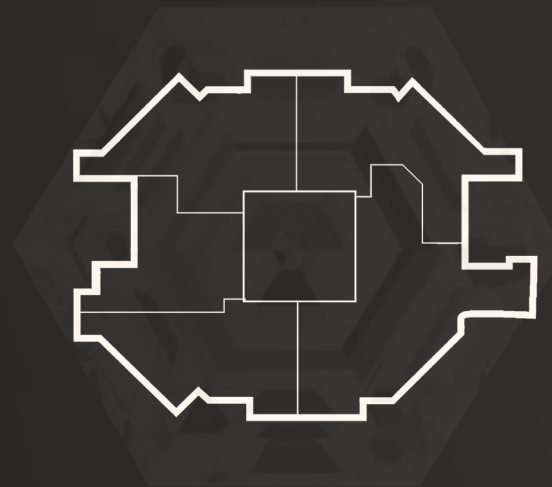
DEGLA LANDMARK

DIAMOND 1

TYPE	D
AREA	121 m ²
BEDROOMS	2 BED.



THE DIAMOND 2

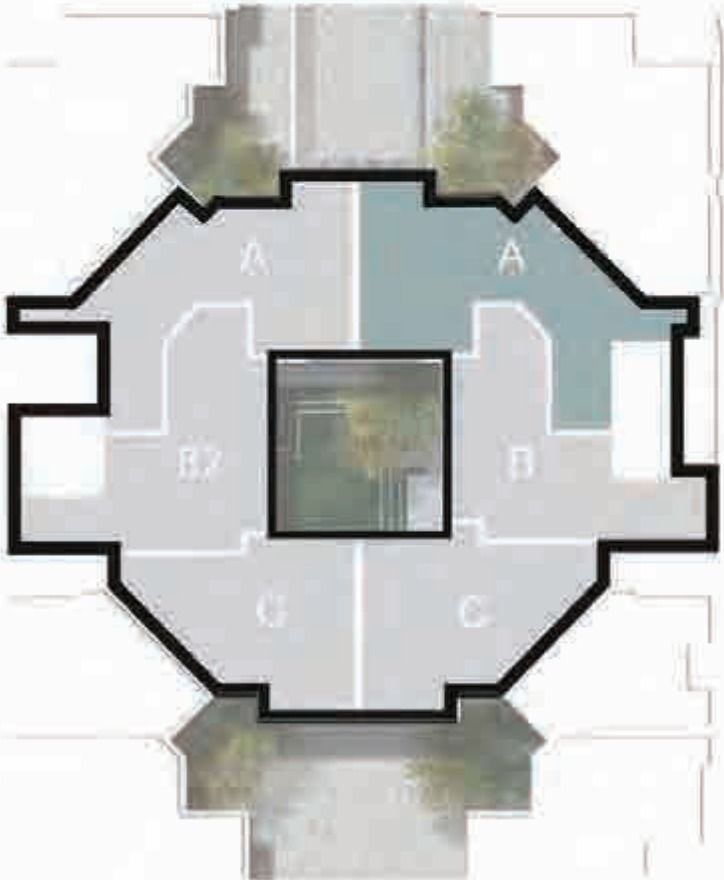




DEGLA LANDMARK

DIAMOND 2

TYPE	A
AREA	128 m ²
BEDROOMS	3 BED.

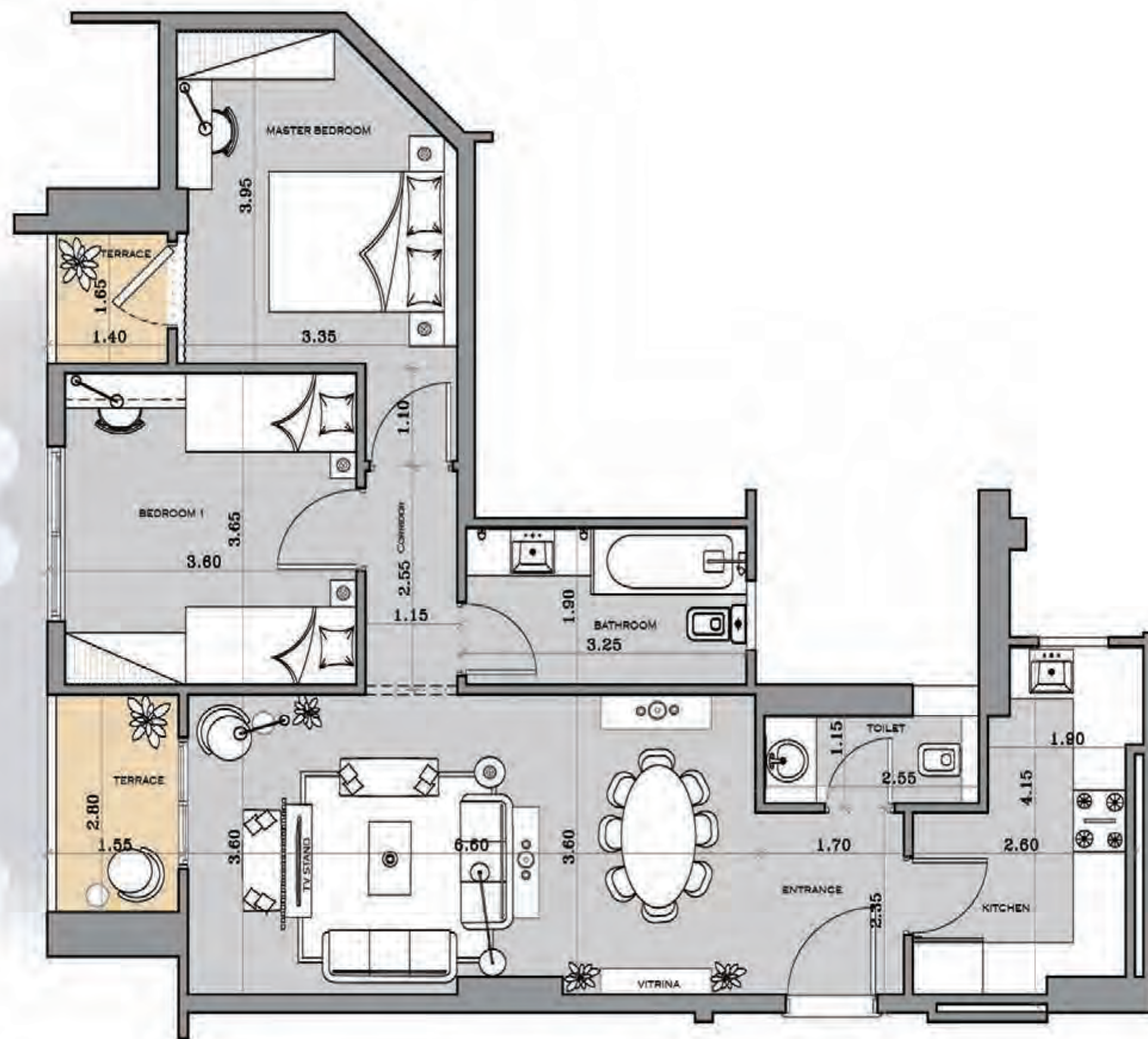
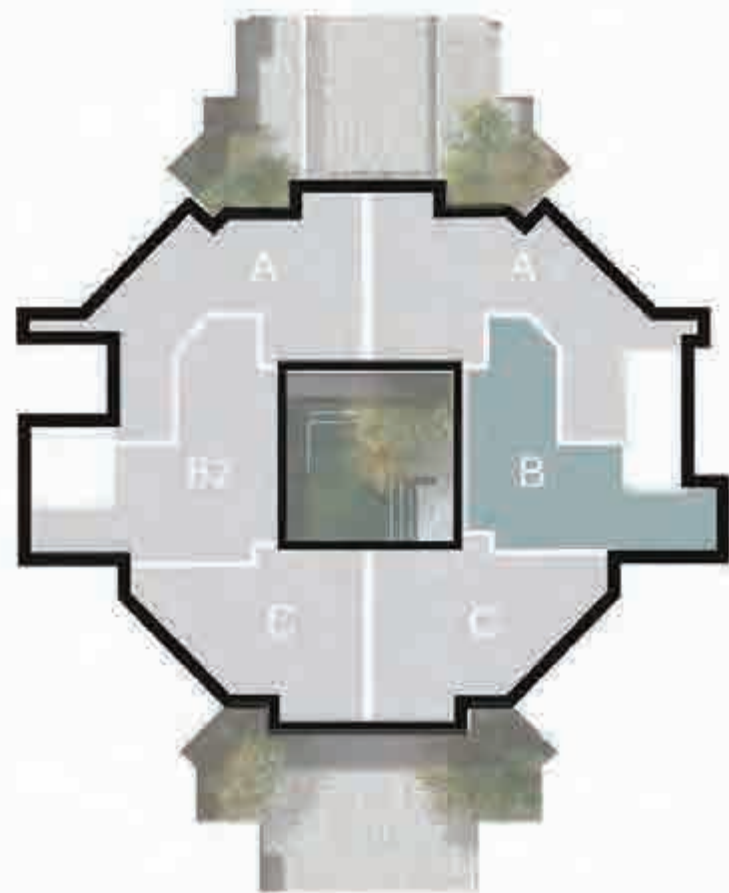




DEGLA LANDMARK

DIAMOND 2

TYPE	B
AREA	109 m ²
BEDROOMS	2 BED.

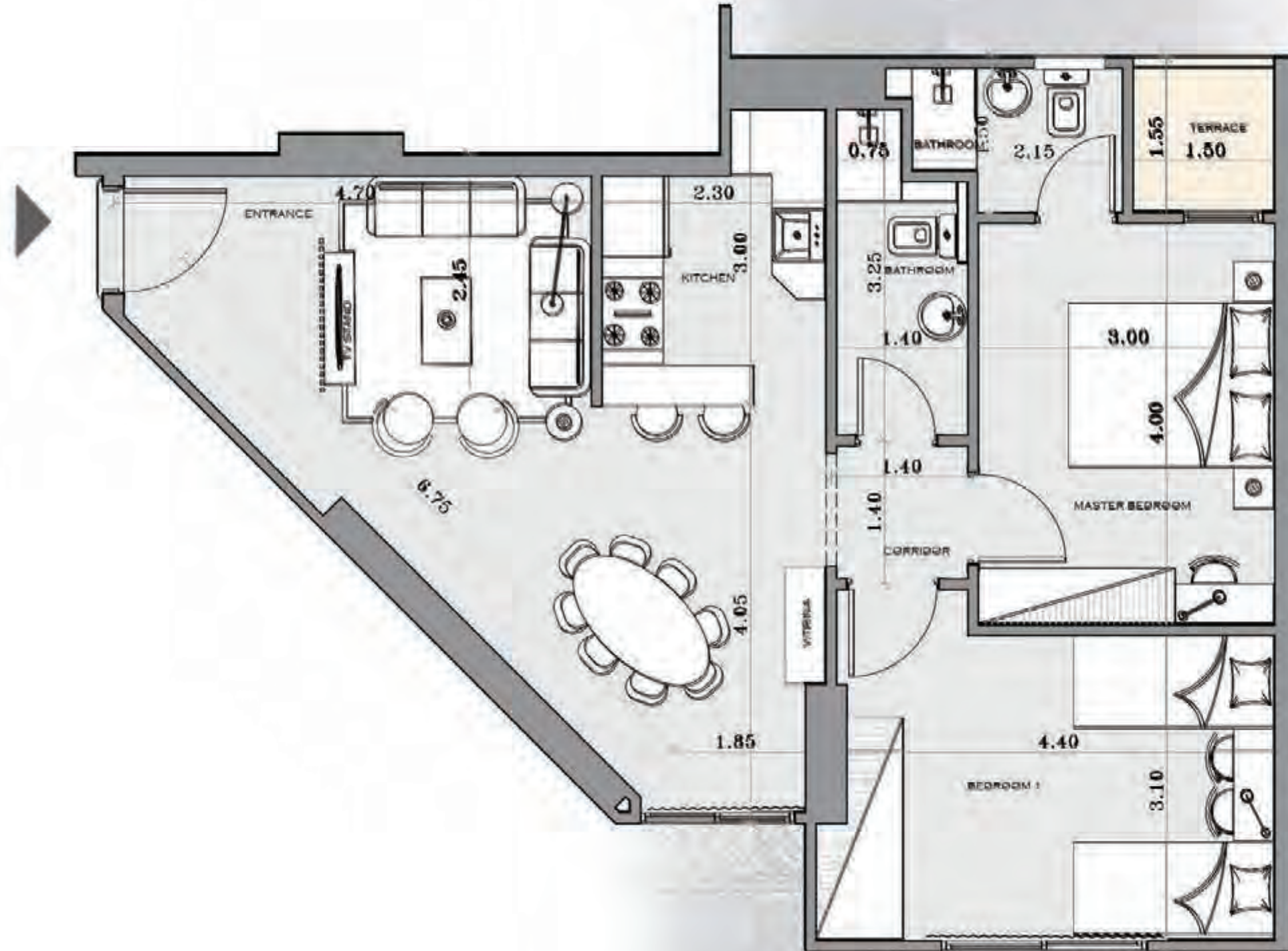




DEGLA LANDMARK

DIAMOND 2

TYPE C
AREA 93 m²
BEDROOMS 2 BED.



EMERALD 1

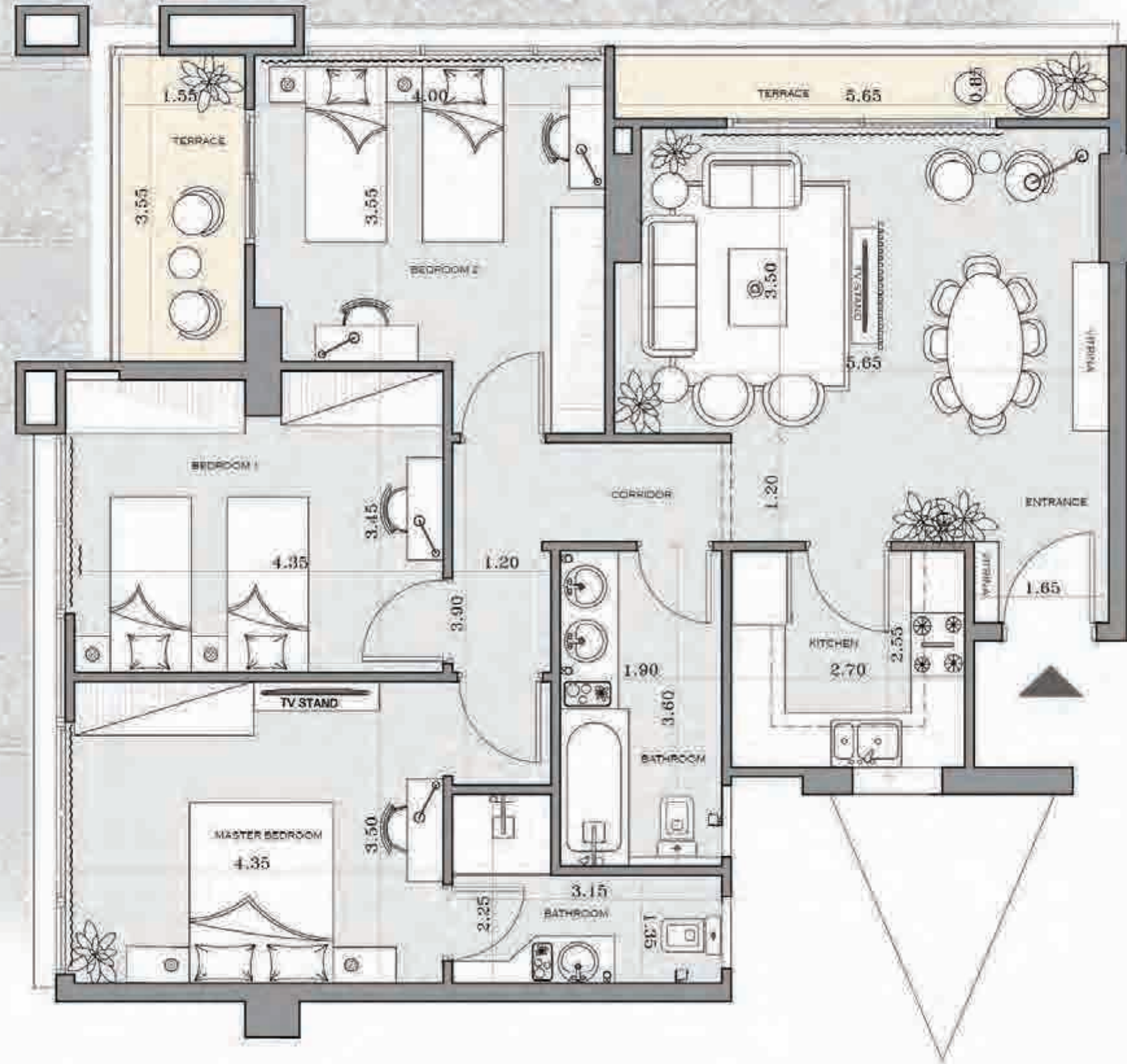
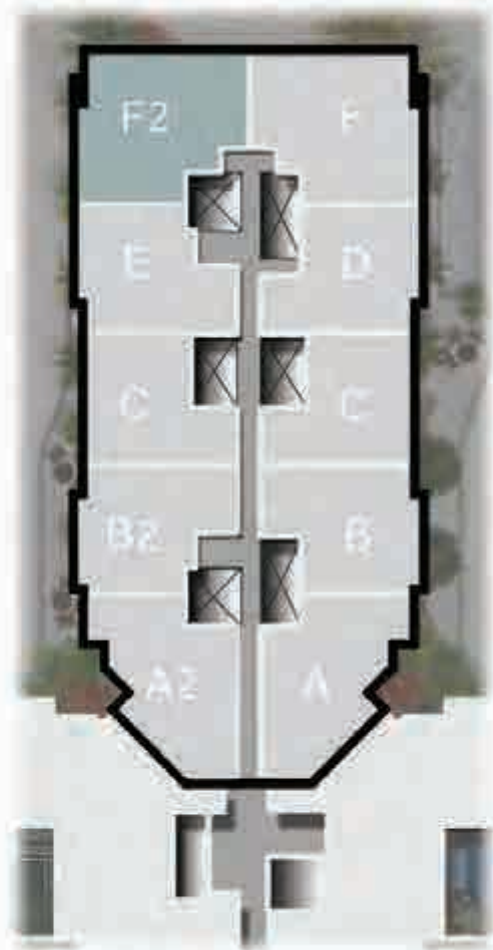




DEGLA LANDMARK

EMERALD 1

TYPE F2
AREA 141 m²
BEDROOMS 2 BED.

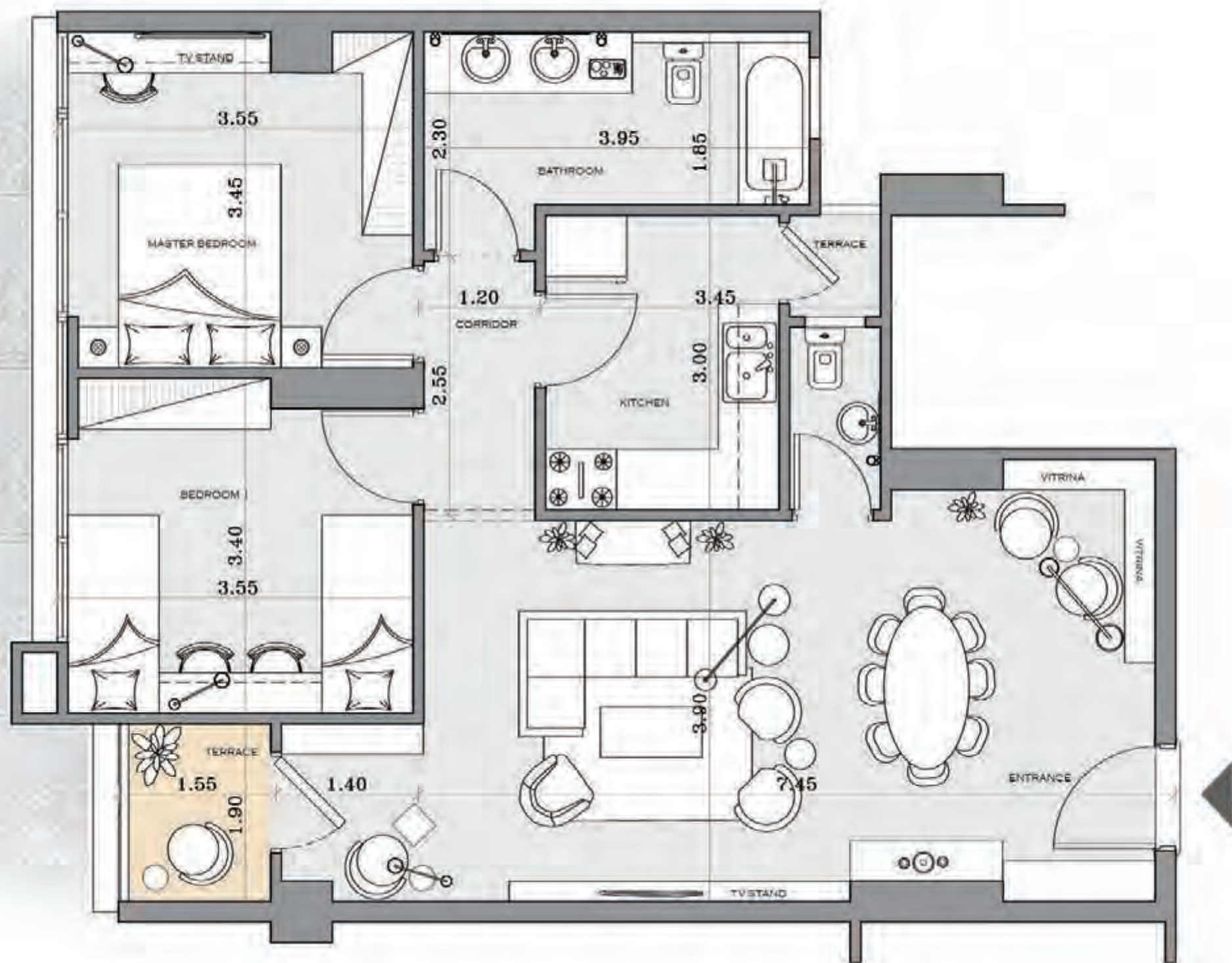
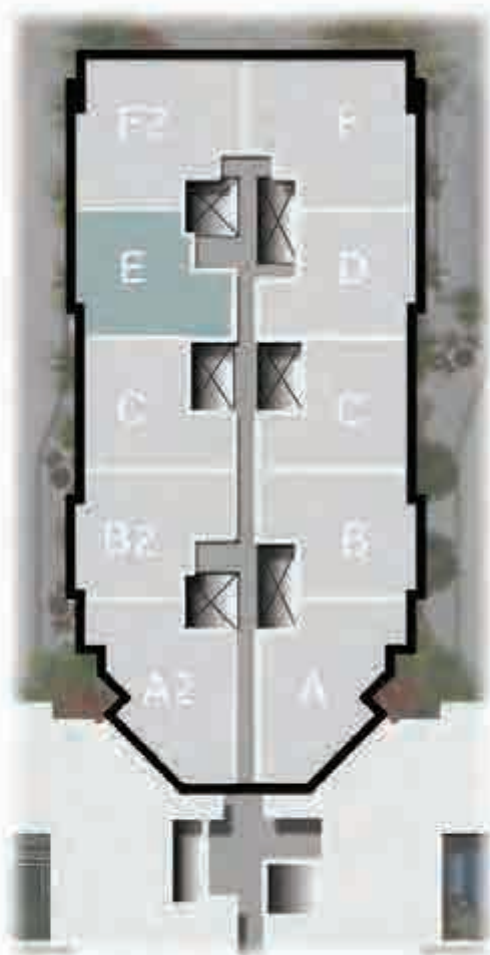




DEGLA LANDMARK

EMERALD 1

TYPE E
AREA 107 m²
BEDROOMS 2 BED.

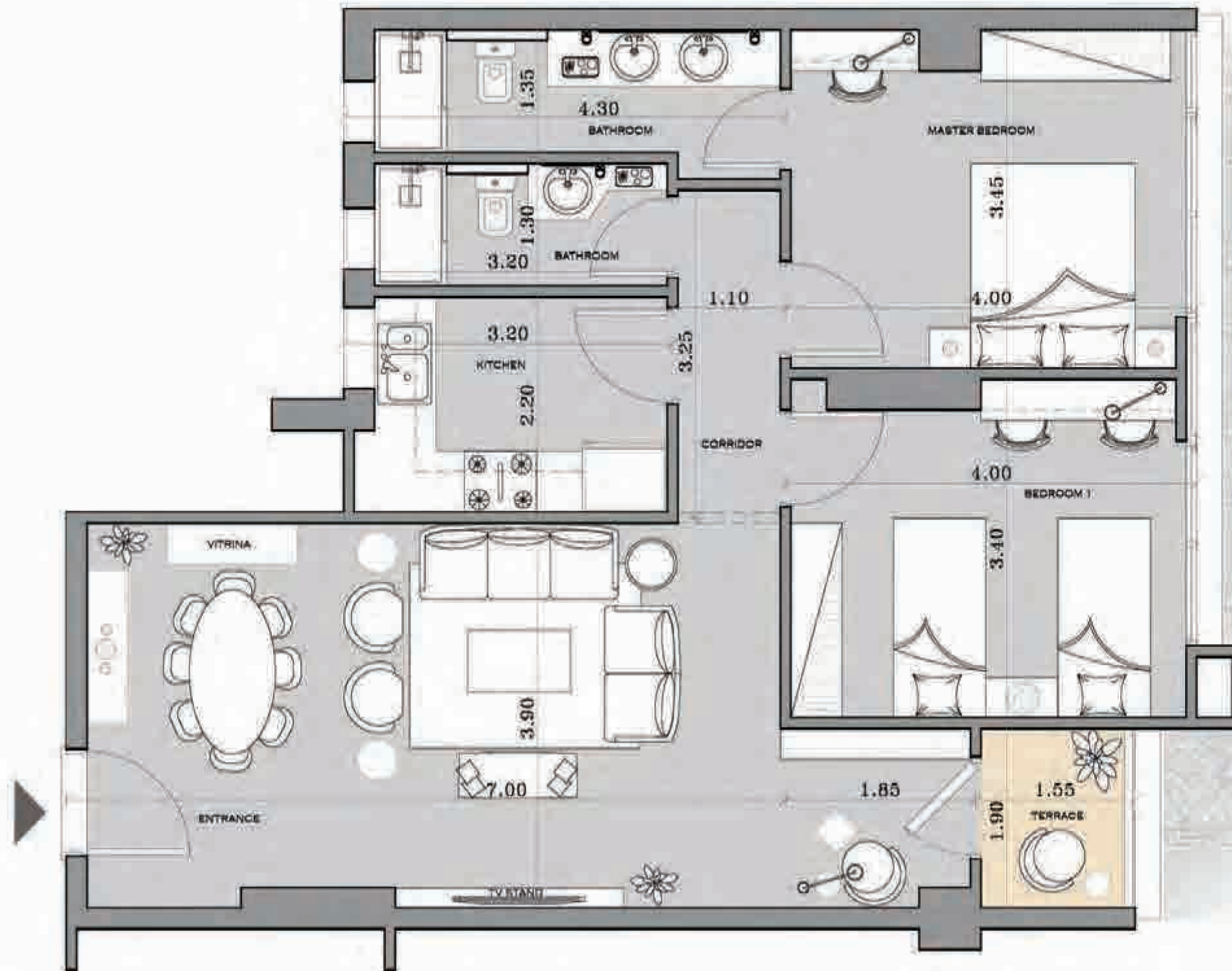
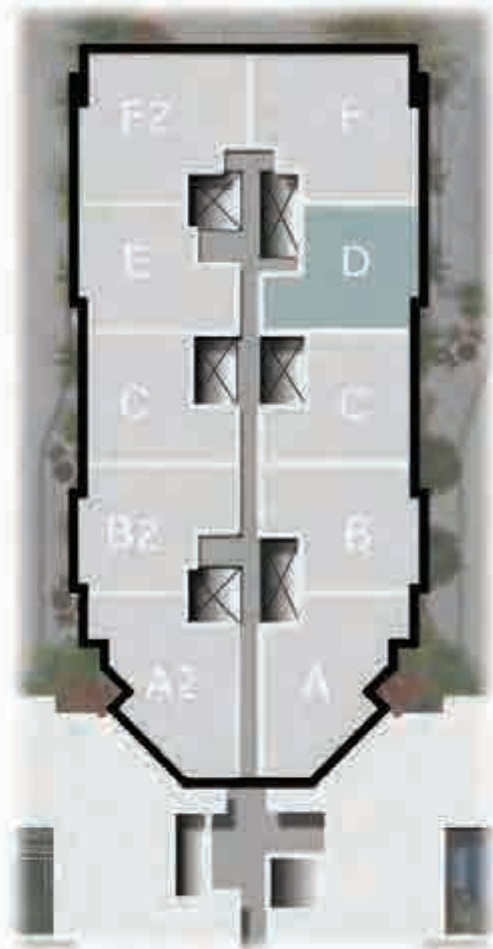




DEGLA LANDMARK

EMERALD 1

TYPE D
AREA 106 m²
BEDROOMS 3 BED.

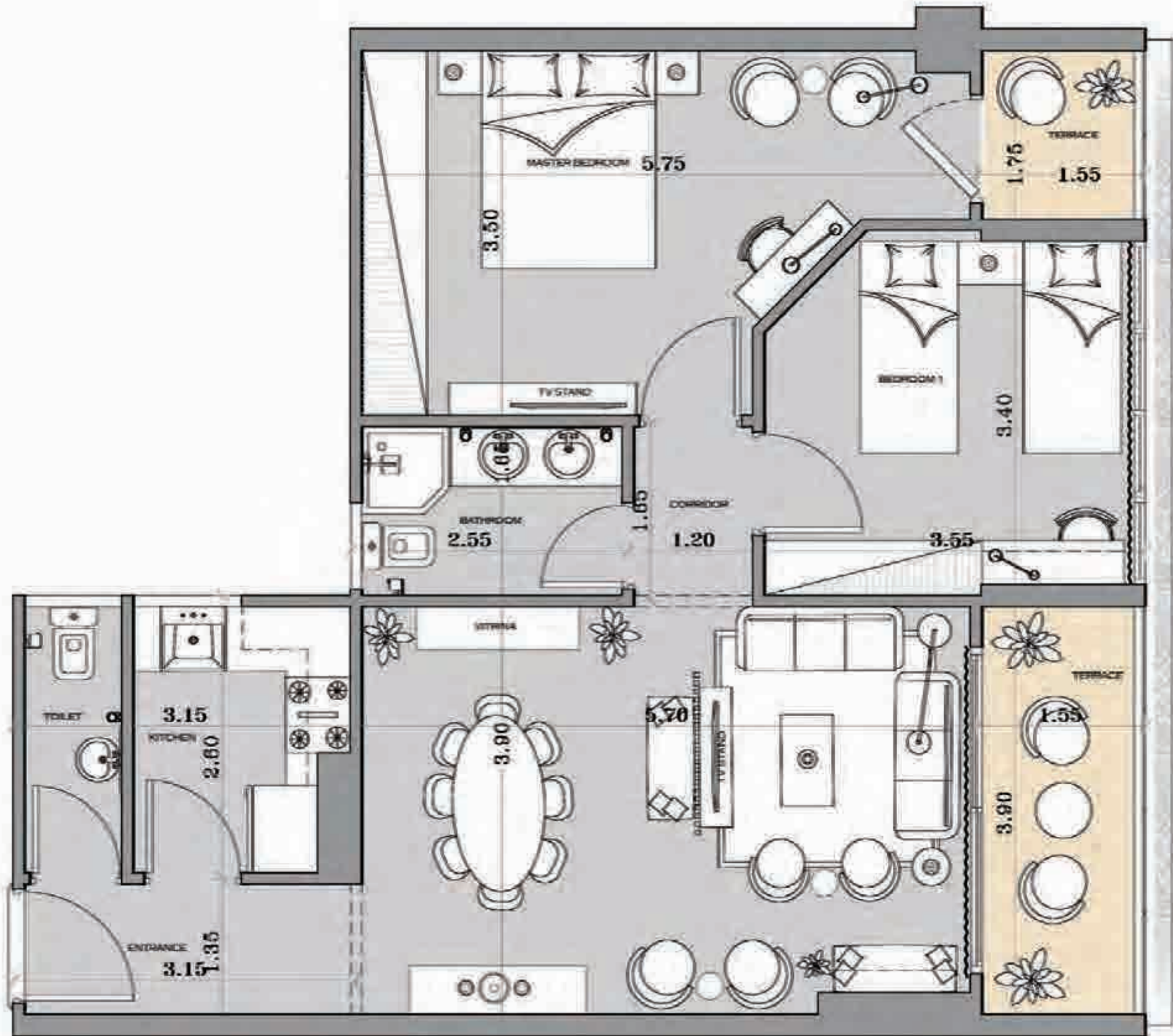
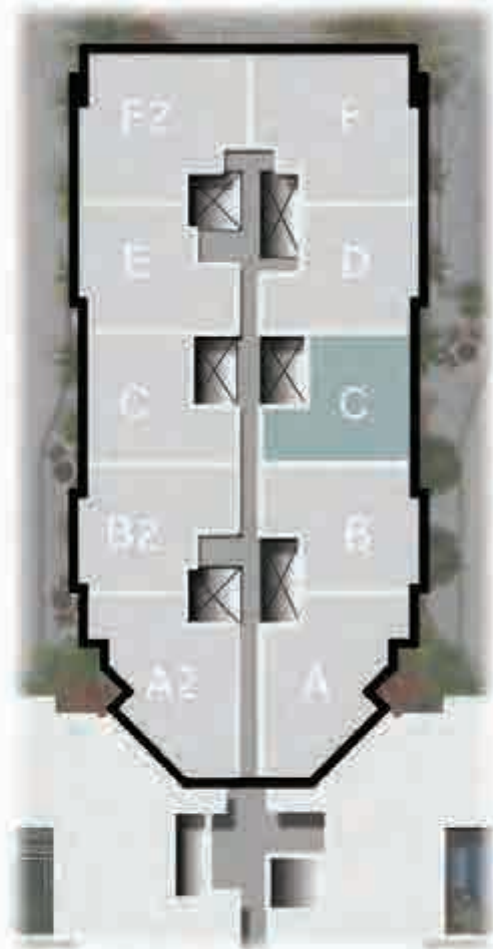




DEGLA LANDMARK

EMERALD 1

TYPE	C
AREA	101 m ²
BEDROOMS	2 BED.

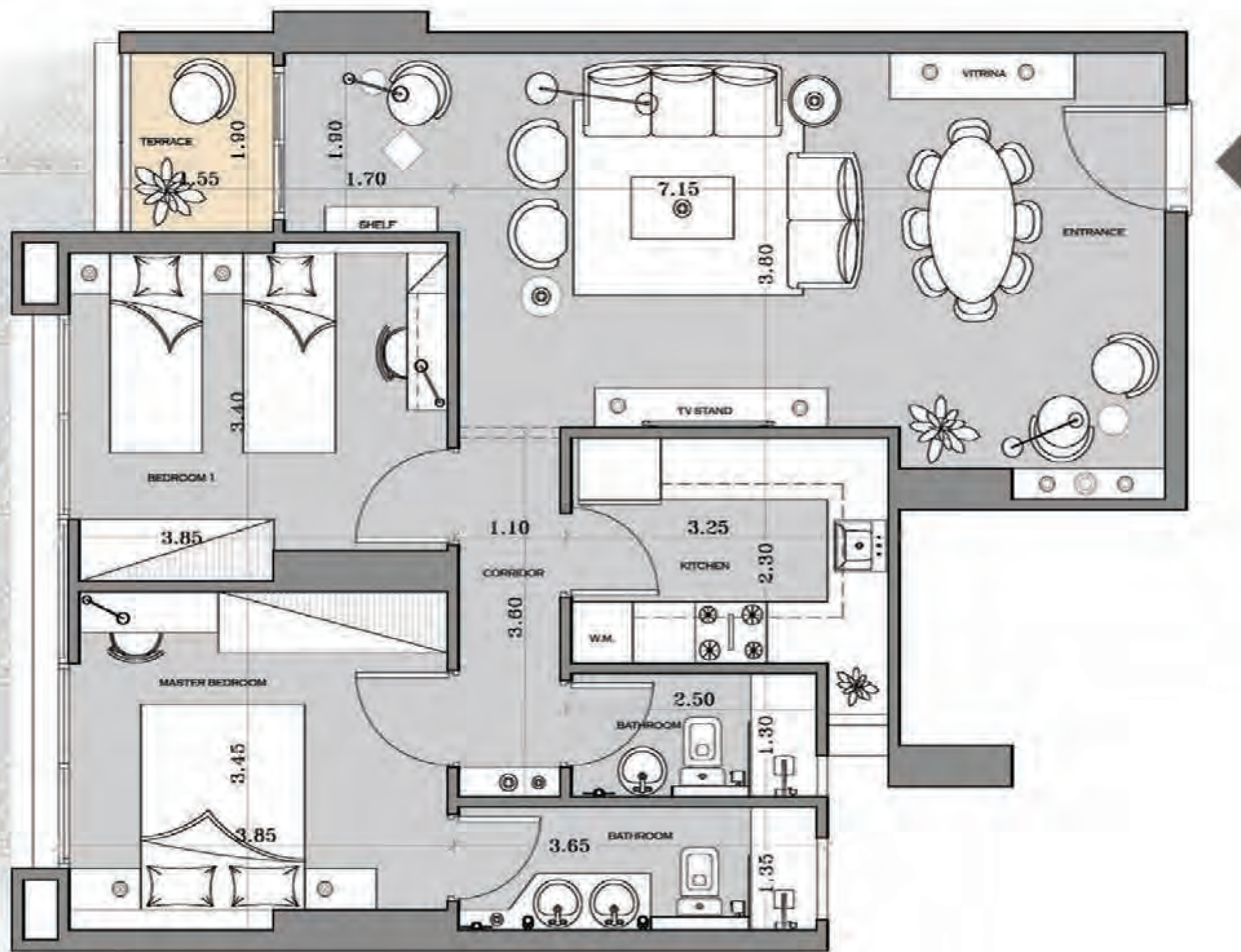
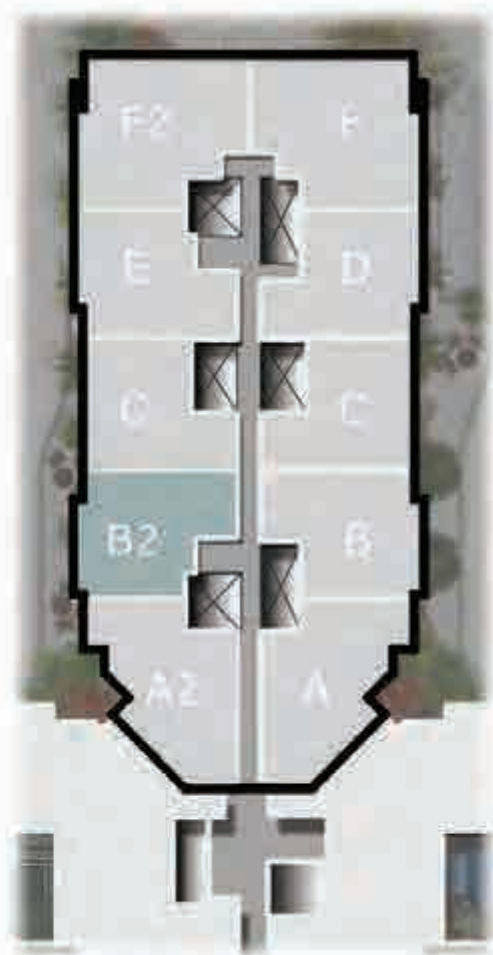




DEGLA LANDMARK

EMERALD 1

TYPE B2
AREA 106 m²
BEDROOMS 2 BED.

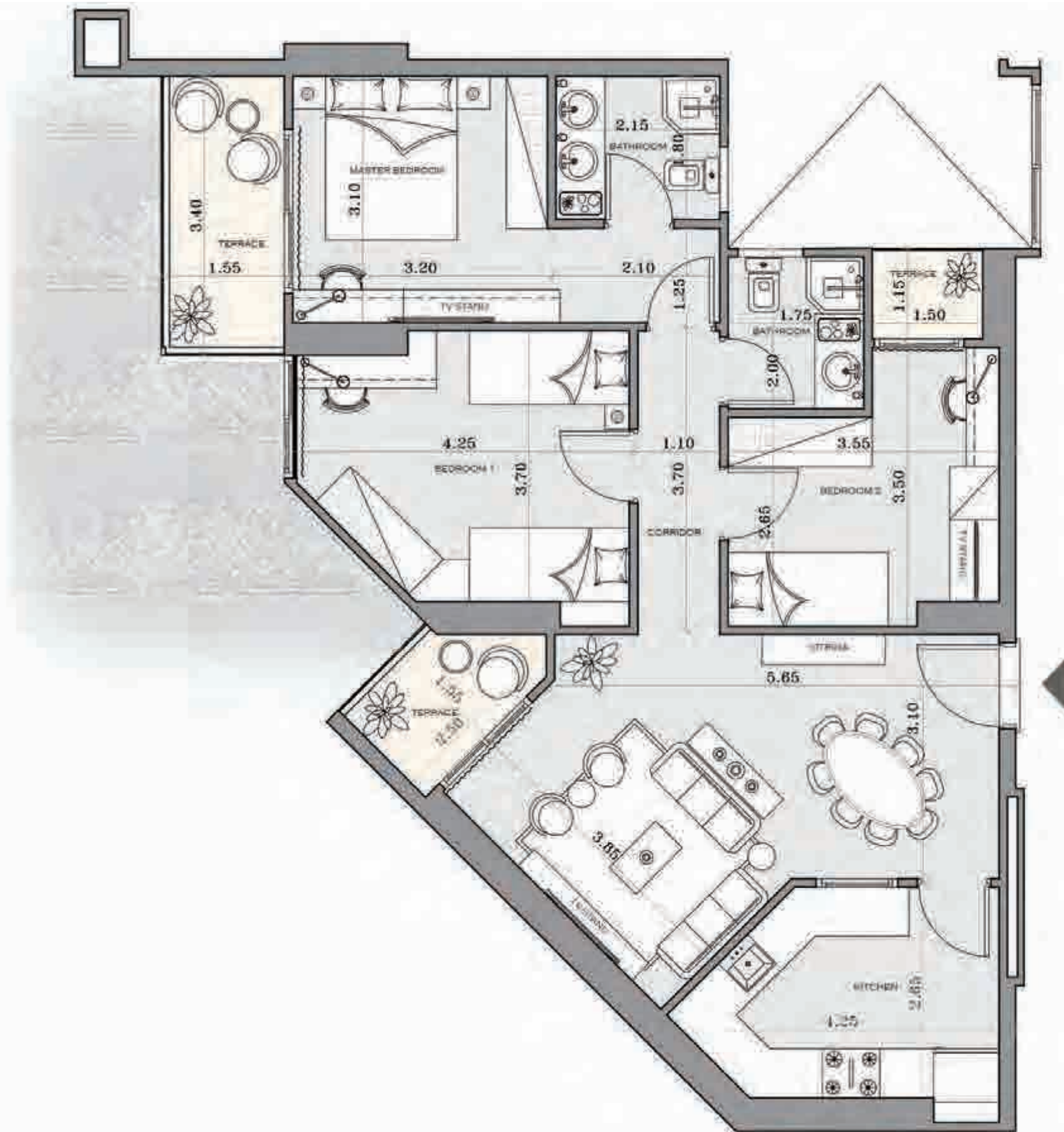
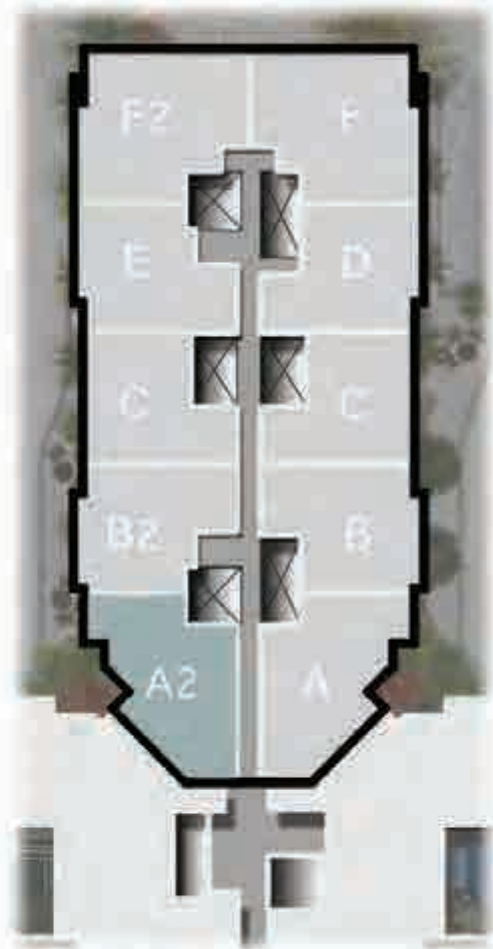




DEGLA LANDMARK

EMERALD 1

TYPE	A2
AREA	123 m ²
BEDROOMS	3 BED.





RECEPTION

INTERIOR SCENES



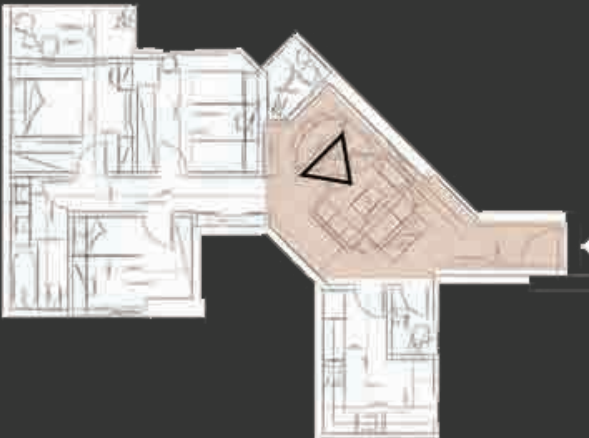
DISCLAIMER

-All displayed drawings & dimensions are approximate; Memaar Al Morshedy reserves the right to make any alterations in façade without prior notifications.
-The contents of this brochure (including, without limitation, layout, names, logos, text, pictures, illustrations and artwork) are the copyrighted property of Memaar Al Morshedy (or the original creator of the material) and are protected under applicable copyright and trademark laws. Any unauthorized use of the trademarks or other contents of this presentation without Memaar Al Morshedy prior written permission may violate civil or criminal laws and will be persecuted.

© 2021 Memaar Al Morshedy . All rights reserved.



LANDMARK



CELEBRATING CREATIVITY SINCE
RECEPTION

 **MEMAAR
ALMORSHEDY**



DISCLAIMER

-All displayed drawings & dimensions are approximate; Memaar Al Morshedy reserves the right to make any alterations in façade without prior notifications.
-The contents of this brochure (including, without limitation, layout, names, logos, text, pictures, illustrations and artwork) are the copyrighted property of Memaar Al Morshedy (or the original creator of the material) and are protected under applicable copyright and trademark laws. Any unauthorized use of the trademarks or other contents of this presentation without Memaar Al Morshedy prior written permission may violate civil or criminal laws and will be persecuted.

© 2021 Memaar Al Morshedy . All rights reserved.



LANDMARK



CREATIVITY IN EVERY EXPLOSION

RECEPTION





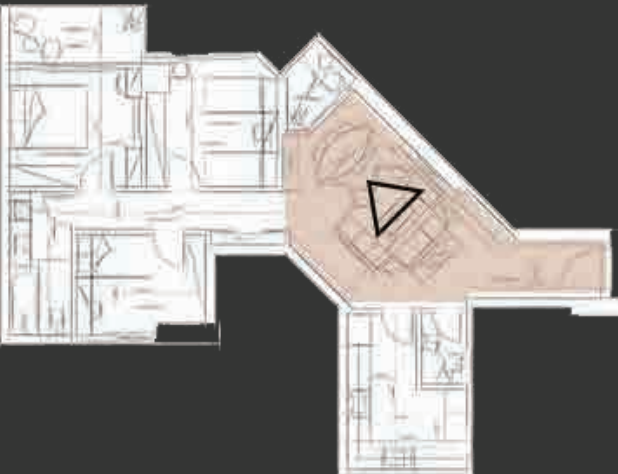
DISCLAIMER

-All displayed drawings & dimensions are approximate; Memaar Al Morshedy reserves the right to make any alterations in façade without prior notifications.
-The contents of this brochure (including, without limitation, layout, names, logos, text, pictures, illustrations and artwork) are the copyrighted property of Memaar Al Morshedy (or the original creator of the material) and are protected under applicable copyright and trademark laws. Any unauthorized use of the trademarks or other contents of this presentation without Memaar Al Morshedy prior written permission may violate civil or criminal law and will be persecuted.

© 2020 Memaar Al Morshedy . All rights reserved.



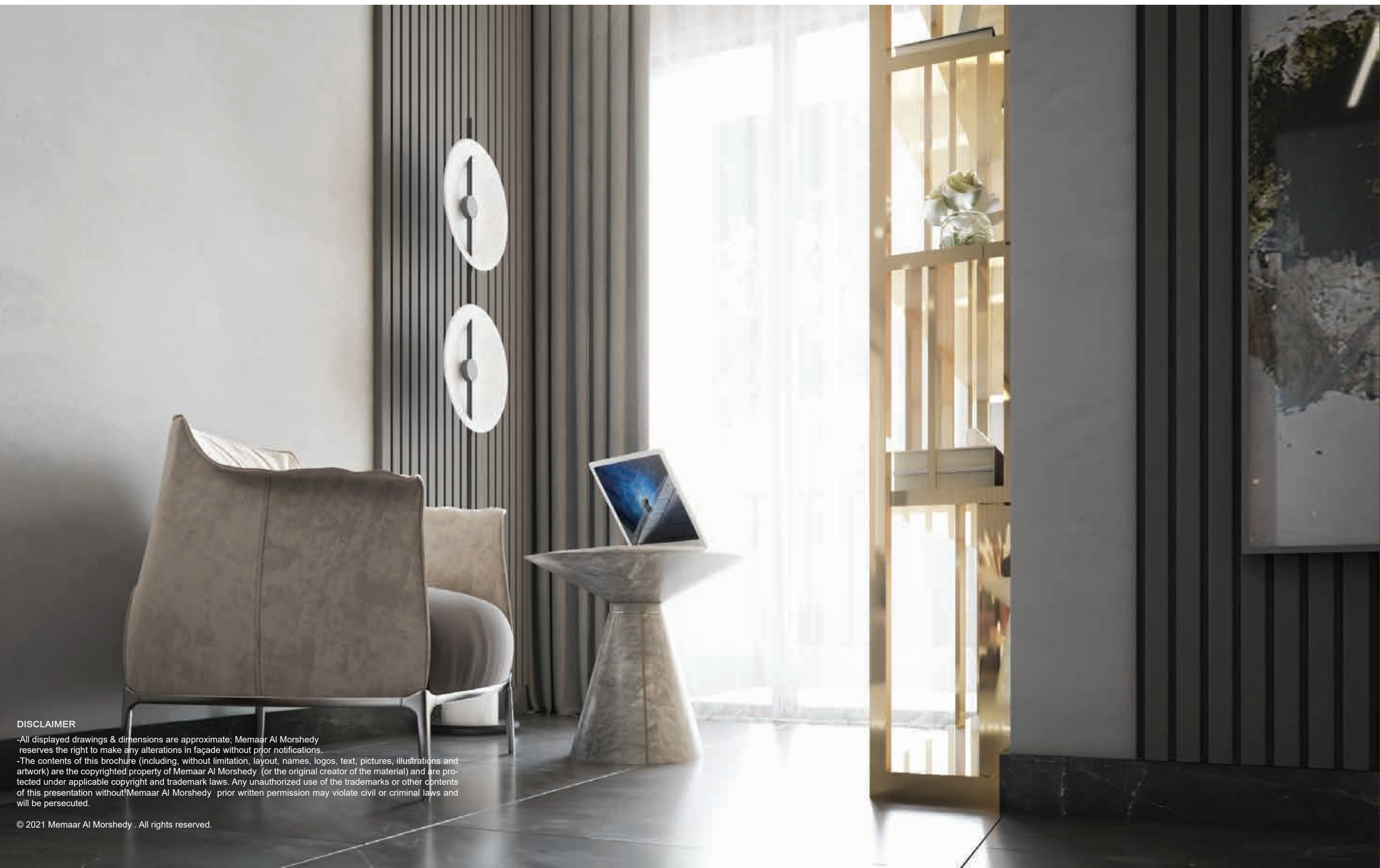
LANDMARK



It's THE DIFFERENCE, It's UNIQUE

RECEPTION

 **MEMAAR
ALMORSHEDY**



DISCLAIMER

-All displayed drawings & dimensions are approximate; Memaar Al Morshedy reserves the right to make any alterations in façade without prior notifications.

-The contents of this brochure (including, without limitation, layout, names, logos, text, pictures, illustrations and artwork) are the copyrighted property of Memaar Al Morshedy (or the original creator of the material) and are protected under applicable copyright and trademark laws. Any unauthorized use of the trademarks or other contents of this presentation without Memaar Al Morshedy prior written permission may violate civil or criminal laws and will be persecuted.

© 2021 Memaar Al Morshedy . All rights reserved.



LANDMARK



TO EXCEED, YOU MUST READ
RECEPTION





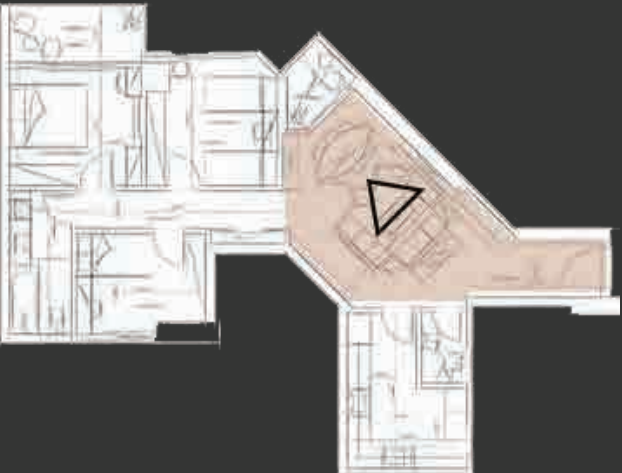
DISCLAIMER

-All displayed drawings & dimensions are approximate; Memaar Al Morshedy reserves the right to make any alterations in façade without prior notifications.
-The contents of this brochure (including, without limitation, layout, names, logos, text, pictures, illustrations and artwork) are the copyrighted property of Memaar Al Morshedy (or the original creator of the material) and are protected under applicable copyright and trademark laws. Any unauthorized use of the trademarks or other contents of this presentation without Memaar Al Morshedy prior written permission may violate civil or criminal laws and will be persecuted.

© 2021 Memaar Al Morshedy . All rights reserved.



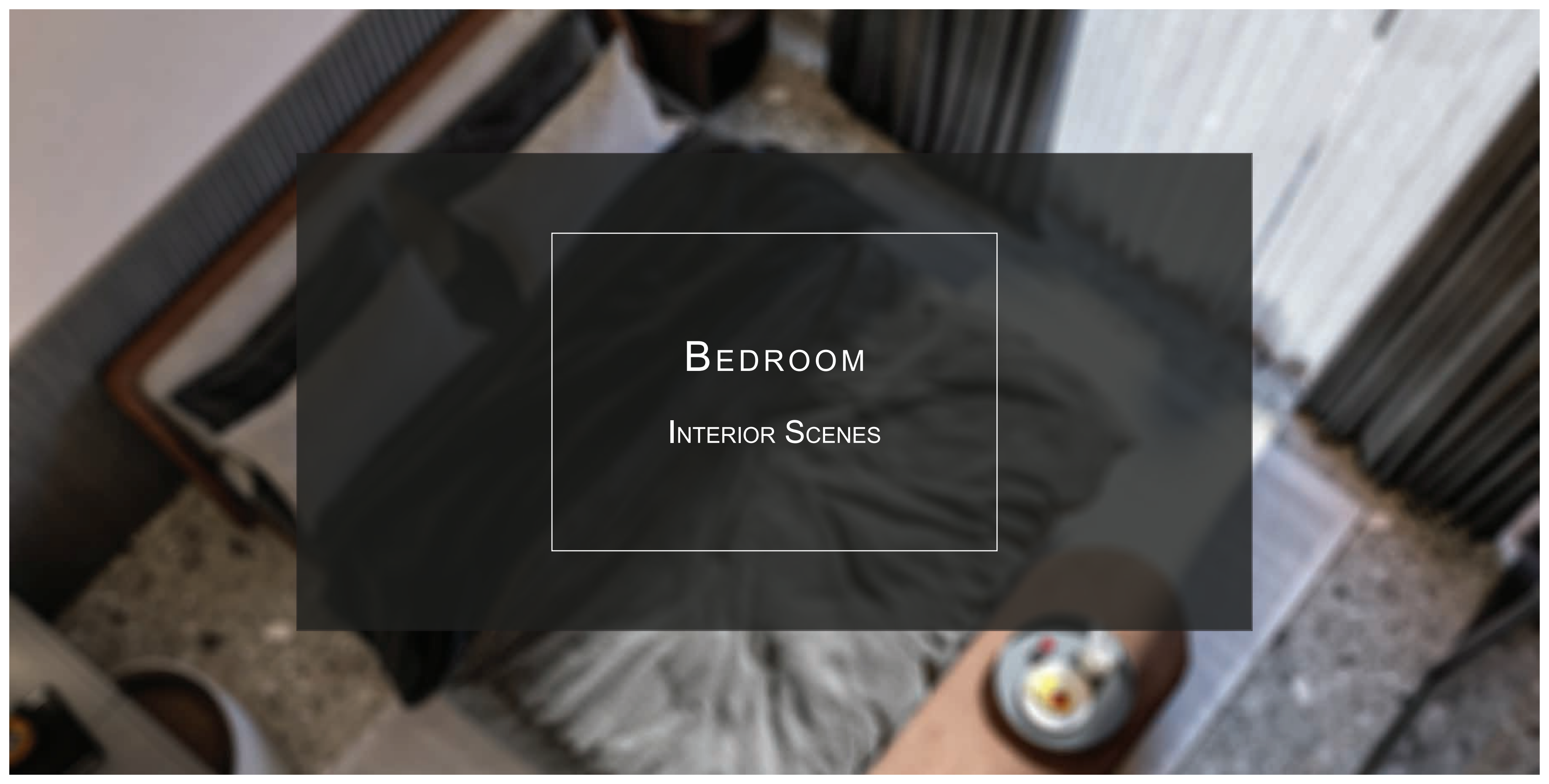
LANDMARK



BRIGHTEN EVERY NOOK
AND CORNER

RECEPTION





BEDROOM

INTERIOR SCENES

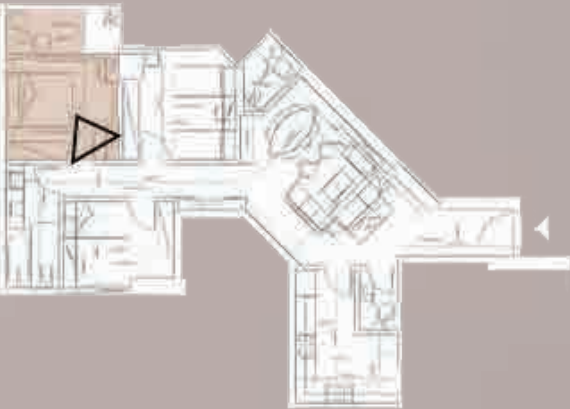


DISCLAIMER
-All displayed drawings & dimensions are approximate; Memaar Al Morshedy reserves the right to make any alterations in façade without prior notifications.
-The contents of this brochure (including, without limitation, layout, names, logos, text, pictures, illustrations and artwork) are the copyrighted property of Memaar Al Morshedy (or the original creator of the material) and are protected under applicable copyright and trademark laws. Any unauthorized use of the trademarks or other contents of this presentation without Memaar Al Morshedy prior written permission may violate civil or criminal laws and will be persecuted.

© 2021 Memaar Al Morshedy . All rights reserved.



LANDMARK



LUXURY ALL AROUND.
BEDROOM

**MEMAAR
ALMORSHEDY**



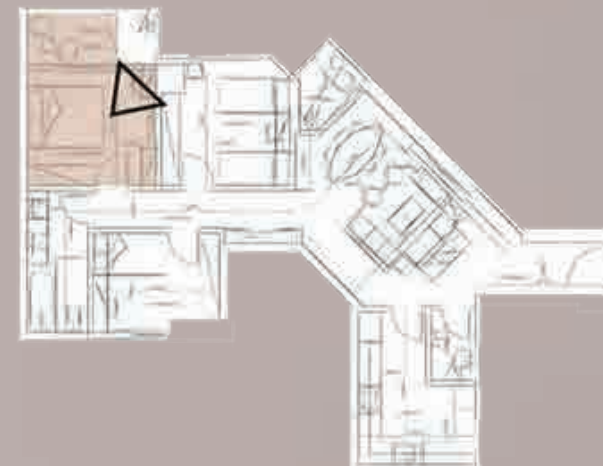
DISCLAIMER

-All displayed drawings & dimensions are approximate; Memaar Al Morshedy reserves the right to make any alterations in façade without prior notifications.
-The contents of this brochure (including, without limitation, layout, names, logos, text, pictures, illustrations and artwork) are the copyrighted property of Memaar Al Morshedy (or the original creator of the material) and are protected under applicable copyright and trademark laws. Any unauthorized use of the trademarks or other contents of this presentation without Memaar Al Morshedy prior written permission may violate civil or criminal laws and will be persecuted.

© 2021 Memaar Al Morshedy . All rights reserved.



LANDMARK



LIVE OUTSIDE THE LINES

BEDROOM

**MEMAAR
ALMORSHEDY**



LANDMARK



A HIGHER QUALITY OF LIVING
BEDROOM

 **MEMAAR
ALMORSHEDY**

DISCLAIMER

-All displayed drawings & dimensions are approximate; Memaar Al Morshedy reserves the right to make any alterations in façade without prior notifications.
-The contents of this brochure (including, without limitation, layout, names, logos, text, pictures, illustrations and artwork) are the copyrighted property of Memaar Al Morshedy (or the original creator of the material) and are protected under applicable copyright and trademark laws. Any unauthorized use of the trademarks or other contents of this presentation without Memaar Al Morshedy prior written permission may violate civil or criminal laws and will be persecuted.

© 2021 Memaar Al Morshedy. All rights reserved.



DISCLAIMER

-All displayed drawings & dimensions are approximate; Memaar Al Morshedy reserves the right to make any alterations in façade without prior notifications.
-The contents of this brochure (including, without limitation, layout, names, logos, text, pictures, illustrations and artwork) are the copyrighted property of Memaar Al Morshedy (or the original creator of the material) and are protected under applicable copyright and trademark laws. Any unauthorized use of the trademarks or other contents of this presentation without Memaar Al Morshedy prior written permission may violate civil or criminal laws and will be persecuted.

© 2021 Memaar Al Morshedy . All rights reserved.



LANDMARK



LIVE THE EXTRAORDINARY
BEDROOM

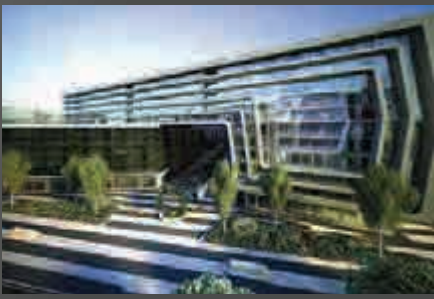
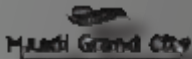
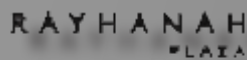
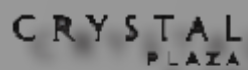
 **MEMAAR
ALMORSHEDY**

Existing Projects

The accomplished vision in our project is only the beginning.



D//View



19086

www.morshedy.com

memaar.almorshedy

memaar.morshedy

memaaralmorshedy

Tower 5, Bavaria Town, Kattameya, Ring road - Cairo - Egypt

DISCLAIMER

-All displayed drawings & dimensions are approximate; Memaar Al Morshedy reserves the right to make any alterations in façade without prior notifications.
-The contents of this brochure (including, without limitation, layout, names, logos, text, pictures, illustrations and artwork) are the copyrighted property of Memaar Al Morshedy (or the original creator of the material) and are protected under applicable copyright and trademark laws. Any unauthorized use of the trademarks or other contents of this presentation without Memaar Al Morshedy prior written permission may violate civil or criminal laws and will be persecuted.

© 2021 Memaar Al Morshedy . All rights reserved.

LANDMARK

